

DELTAGARD® G

Insecticide Granule

FOR SALE TO, USE AND STORAGE BY COMMERCIAL APPLICATORS ONLY.
FOR INSECT CONTROL IN TURFGRASSES, LANDSCAPE ORNAMENTAL
PLANTINGS (INCLUDING INTERIOR PLANTSCAPES), PERIMETERS AROUND
COMMERCIAL, INDUSTRIAL, RESIDENTIAL, AND RECREATIONAL AREAS.
FOR OUTDOOR USE ON LAWNS, GROUNDS, AND PERIMETER TREATMENTS.

Kills Listed Insects in Lawns

Controls Listed Home Invading Pests

10 Pounds Treats up to 5,000 Square Feet

Controls Listed Surface-Feeding Pests

Kills Ticks (Including those that may carry Lyme Disease)

NOT FOR USE ON GOLF COURSES OR SOD FARMS

Water Dispersible Granule

ACTIVE INGREDIENT:

Deltamethrin:..... 0.1%

OTHER INGREDIENTS:.....99.9%

TOTAL: 100.0%

EPA Reg. No. 101563-14

EPA Est. No. 070989-MO-001

KEEP OUT OF REACH OF CHILDREN
CAUTION

PRECAUCION AL USARIO: Si usted no lee ingles, no use este producto
hasta que la etiqueta le haya sido explicado ampliamente.

(TO THE USER: If you cannot read English, do not use this product until the
label has been fully explained to you.)

For MEDICAL and TRANSPORTATION Emergencies ONLY

Call 24 Hours A Day 1-800-424-9300

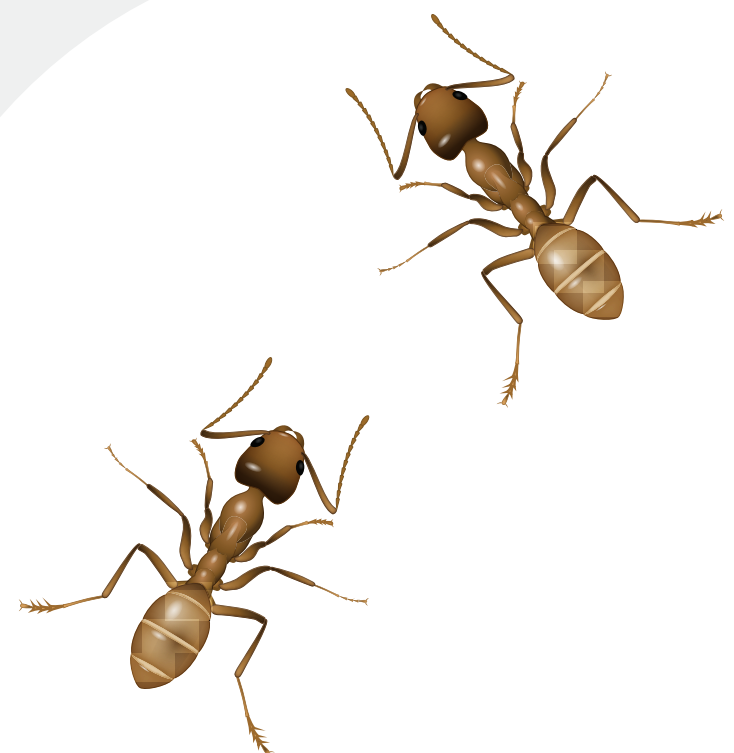
For PRODUCT USE Information Call 1-800-331-2867

SKU # 79121539

79096275F 221216AV1

Net Weight

20 Pounds



Ants

FIRST AID	
If swallowed:	<ul style="list-style-type: none">• Call a poison control center or doctor immediately for treatment advice.• Have person sip a glass of water if able to swallow.• Do not induce vomiting unless told to do so by a poison control center or doctor.
If in eyes:	<ul style="list-style-type: none">• Hold eye open and rinse slowly and gently with water for 15-20 minutes.• Remove contact lenses, if present, after the first 5 minutes, then continue rinsing eyes.• Call a poison control center for treatment.
If on skin or clothing:	<ul style="list-style-type: none">• Take off contaminated clothing.• Rinse skin immediately with plenty of water for 15-20 minutes.• Call a poison control center or doctor for treatment advice.
If inhaled:	<ul style="list-style-type: none">• Move person to fresh air.• If person is not breathing, call 911 or an ambulance, then give artificial respiration, preferably mouth-to-mouth if possible.• Call a poison control center or doctor for further treatment advice.
Have the product container or label with you when calling a poison control center or doctor or going for treatments.	

PRECAUTIONARY STATEMENTS
HAZARDS TO HUMANS AND DOMESTIC ANIMALS
CAUTION

Harmful if swallowed. Causes moderate eye irritation. Avoid contact with eyes or clothing. Wash thoroughly with soap and water after handling.

ENVIRONMENTAL HAZARDS

This product is extremely toxic to fish and aquatic invertebrates. Use with care when applying in areas adjacent to any body of water.

To protect the environment, do not allow pesticide to enter or run off into storm drains, drainage ditches, gutters, or surface waters. Applying this product in calm weather when rain is not predicted for the next 24 hours will help to ensure that wind or rain does not blow or wash pesticide off the treatment area. Sweeping any product that lands on a driveway, sidewalk, or street, back onto the treated area of the lawn or garden will help to prevent run off to water bodies or drainage systems.

DIRECTIONS FOR USE

It is a violation of Federal law to use this product in a manner inconsistent with its labeling.

APPLICATION RESTRICTIONS

Not for use on plants being grown for sale or other commercial use, or for commercial seed production, or for research purposes. For use on plants intended for aesthetic purposes or climatic modification and being grown in ornamental gardens or parks, or on lawns and grounds.

Not for use in commercial greenhouses or nurseries.

Not for use on sod farms, grass grown for seed, or on golf course turf.

Apply this product directly to the lawn or garden area. Water treated area as directed on this label. Do not water to the point of run-off.

Do not make applications during rain.

Do not apply on saturated soil. Do not allow runoff to occur. Do not contaminate ornamental fish ponds.

Application is prohibited directly into sewers or drains, or to any area like a gutter where drainage to sewers, storm drains, water bodies, or aquatic habitat can occur. Do not allow the product to enter any drain during or after application.

Apply this product as prescribed on this label.

To avoid potential residue on concrete surfaces (patios, sidewalks, driveways, pavers, or similar material), it is recommended that granules applied to these surfaces be removed.

In New York State, product may not be applied to turf within 100 feet of a coastal marsh, or stream that drains directly into a coastal marsh. For control of turf insects other than ticks in New York State, a second application may be made after two weeks if target insect activity persists.

Food utensils such as spoons and measuring cups must not be used for food purposes after use in measuring pesticides. Do not allow children or pets on treated areas until granules have been watered into the soil and the grass or soil is dry.

PRODUCT INFORMATION

DELTAGARD® G Insecticide Granule is a broad spectrum residual pyrethroid insecticide for the control of major insect pests in turfgrasses and landscape ornamentals (including interior plantscapes) and around the perimeters of structures in residential, commercial, and recreational areas. DELTAGARD G Insecticide Granule is a 0.1% granular formulation of deltamethrin on a water dispersible carrier. Treat as directed. Use with care when applying in areas adjacent to any body of water.

RECOMMENDATIONS FOR TURFGRASSES, ORNAMENTAL PLANTINGS, AND PERIMETER TREATMENTS:

Apply DELTAGARD G Insecticide Granule as a broadcast application with suitable and calibrated application equipment to give complete and uniform coverage of pest infested areas. Applications should be made using the rates shown below:

Pest	Dosage of Product	Application Procedure
Annual bluegrass weevil (<i>Hyperodes</i>) (adult), Ants, Armyworms, Bermudagrass mites, Billbugs (adult), Black Turfgrass Ataenius, Boxelder bugs, Centipedes, Chiggers, Chinchbugs, Clover mites, Cockroaches, Crickets, Cutworms, Darkling ground beetles, Digger wasps, Essex skipper, Field crickets, Fiery skipper, Fire ants, Firebrats, Flea beetles, Grasshoppers, Japanese Beetles (adult), Lawn moths, Leafhoppers, Mealybugs (adult), Scorpions, Silverfish, Sod webworms, Sowbugs, Spiders, Spittlebugs, Springtails, Ticks (including those that may carry lyme disease), and Vegetable weevils	2 to 3 pounds per 1,000 square feet OR 0.08 to 0.13 pound active ingredient per acre OR 87 to 131 pounds per acre	Treat when insects first appear. Apply this product uniformly to the treated area. Use the higher application rate for subsurface pests and/or for extended residual control. For optimum results, irrigate with an adequate quantity of water to thoroughly moisten grass and thatch, and dissolve the insecticide granules. Do not apply more than once per week. For Imported Fire Ants, do not apply more than once every two weeks.
Mole crickets	2 to 3 pounds per 1,000 square feet	In order to improve efficacy, irrigate as soon as possible with 1/4 to 1/2 inch of water. Do not apply more than once per week.

APPLICATION EQUIPMENT: DELTAGARD G Insecticide Granule is a granular formulation. Apply with a fertilizer spreader or equivalent equipment as uniformly as possible. Spreaders should be calibrated periodically to ensure that equipment wear or other factors have not altered the flow rate of DELTAGARD G Insecticide Granule. Calibration instructions are included in the Owner's Manual that was provided by the equipment manufacturer at the time of purchase.

DELTAGARD G Insecticide Granule Recommended Spreader Settings

Professional						
Applicator Brand	Model	Type	Swath in Feet	Travel in MPH	Applicator Setting: 0.08 pounds active ingredient per acre	Applicator Setting: 0.13 pounds active ingredient per acre
Earthway EV-N Spread	2150	Spin Spreader	9.00	3.00	12.00	13.00
Scotts	Pro	Spin Spreader	12.00	3.00	H.5	J
Lesco Rotary	021820	Spin Spreader	11.00	3.00	A.5	B
Spyker	B3-pro	Spin Spreader	10.00	3.00	3.00	3.30
Republic EZ-Spreader*	Hand	Spin Spreader				
* Set to 5 to deliver 2 pounds of product per 1,000 square feet						
Lawn & Garden						
Applicator Brand	Model	Type	Swath in Feet	Travel in MPH	Applicator Setting: 0.08 pounds active ingredient per acre	Applicator Setting: 0.13 pounds active ingredient per acre
Scotts	Speedy Green 3000	Spin Spreader	7.00	2.75	2.00	2.50
Scotts	Accu Green 3000	Drop Spreader	1.80	2.75	2.25	2.75

TICK CONTROL (OUTDOORS): For control of **Ticks** (including, but not limited to **Bear Tick, Black-legged Tick, Brown Dog Tick, Deer Tick, Lone Star Tick, Western Black-legged Tick, Wood Tick**), a regular treatment program should be followed. Treat once a month as directed above when pests first appear in late spring (May-June) and continue until late summer (August-September) into the fall.

SOD WEBWORMS: If **Lawn Moths (Sod Webworm Adults)** are noticed in large numbers at dusk, or at first sign of damage to lawn, treat entire lawn uniformly.

PERIMETER TREATMENT: To help prevent infestation of buildings by **Ants, Boxelder Bugs, Brown Dog Ticks, Centipedes, Cockroaches, Clover Mites, Crickets, Field Crickets, Fire Ants, Sowbugs, Spiders, Springtails (Collembola), Termites, and Ticks;** treat a band 5 to 10 feet wide around and adjacent to the building where pests are active and may find entrance. Treat at a rate of 1 to 1 1/2 pounds per 500 square feet or 2 to 3 pounds per 1,000 square feet.

For termites, the purpose of such applications of DELTAGARD G Insecticide Granule is to kill workers or winged reproductive forms which may be present at the time of treatment. Such applications are not a substitute for mechanical alteration, soil treatment or foundation treatment but are merely a supplement.

SPOT TREATMENT: To control **Ants**, including **Acrobat, Argentine, Big Headed, Cornfield, Harvester, Leafcutter, Little Black, Pavement and Pyramid Ants;** if possible, locate and treat nest first. Product should be applied to thoroughly cover the nest (1 to 2 teaspoons) and sprinkled with sufficient water to dissolve granules. In addition to treating ant nests or mounds, entry points of buildings and the soil surface along the perimeter of the building should be treated.

DIGGER WASPS: Apply 1 to 2 teaspoons of granules in and around each individual ground nest opening. Make the application at dusk when wasps are not active.

IMPORTED FIRE ANTS: Apply two tablespoons over each 8” to 10” diameter mound and up to 2 feet around to prevent escape of the queen. Immediately after application, water the granules into the soil gently with a light sprinkling can to avoid disturbing the colony. Use at least 1 gallon of water per mound. Apply in cool weather during the spring and fall (65°-80°F), or in early morning or late evening for best results. Treat new mounds as they appear, but no more than once every two weeks. If possible, make applications after a recent rainfall.

FLOWER, SHRUB, ORNAMENTAL PLANT BEDS AND INTERIOR PLANTSCAPES:

To control **Ants, Fire Ants, Armyworms, Centipedes, Cockroaches, Crickets, Cutworms, Grasshoppers, Pillbugs, Sowbugs, Spiders, Springtails, and Ticks;** apply granules evenly over soil within the beds, interiorscapes, and under shrubbery. Use the same dosage recommended for control of these pests in lawns. For optimum results, irrigate with an adequate quantity of water to thoroughly moisten treated area and dissolve the insecticide granule. Do not use on or around fruit and nut trees, vegetable plants or around any plants used for food.

STORAGE AND DISPOSAL

Do not contaminate water, food, or feed by storage or disposal.

Pesticide Storage: Store in original container in a secured, dry storage area. Prevent cross-contamination with other pesticides and fertilizers. If the container is leaking or material is spilled, sweep up and remove to chemical waste area.

Pesticide Disposal: Wastes resulting from the use of this product may be disposed of on-site or at an approved waste disposal facility.

Container Handling: Non-refillable container. Do not reuse or refill this container. Offer for recycling, if available. Completely empty container (by shaking and tapping sides and bottom) into application equipment. Dispose of container in a sanitary landfill or by incineration if allowed by State and local authorities. If burned, stay out of smoke.

IMPORTANT: READ BEFORE USE

Read the entire Directions for Use, Conditions, Disclaimer of Warranties and Limitations of Liability before using this product. If terms are not acceptable, return the unopened product container at once.

By using this product, user or buyer accepts the following Conditions, Disclaimer of Warranties and Limitations of Liability.

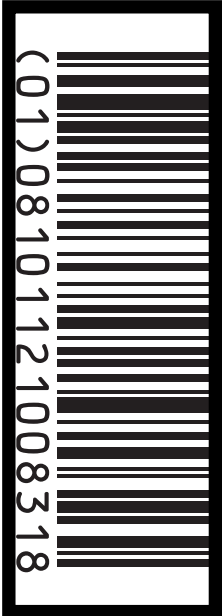
CONDITIONS: The directions for use of this product are believed to be adequate and must be followed carefully. However, it is impossible to eliminate all risks associated with the use of this product. Crop injury, ineffectiveness or other unintended consequences may result because of such factors as weather conditions, presence of other materials, or the manner of use or application, all of which are beyond the control of Environmental Science U.S., LLC. All such risks shall be assumed by the user or buyer.

DISCLAIMER OF WARRANTIES: TO THE EXTENT CONSISTENT WITH APPLICABLE LAW, ENVIRONMENTAL SCIENCE U.S., LLC MAKES NO OTHER WARRANTIES, EXPRESS OR IMPLIED, OF MERCHANTABILITY OR OF FITNESS FOR A PARTICULAR PURPOSE OR OTHERWISE, THAT EXTEND BEYOND THE STATEMENTS MADE ON THIS LABEL. No agent of Environmental Science U.S., LLC is authorized to make any warranties beyond those contained herein or to modify the warranties contained herein. TO THE EXTENT CONSISTENT WITH APPLICABLE LAW, ENVIRONMENTAL SCIENCE U.S., LLC DISCLAIMS ANY LIABILITY WHATSOEVER FOR SPECIAL, INCIDENTAL OR CONSEQUENTIAL DAMAGES RESULTING FROM THE USE OR HANDLING OF THIS PRODUCT.

LIMITATIONS OF LIABILITY: TO THE EXTENT CONSISTENT WITH APPLICABLE LAW, THE EXCLUSIVE REMEDY OF THE USER OR BUYER FOR ANY AND ALL LOSSES, INJURIES OR DAMAGES RESULTING FROM THE USE OR HANDLING OF THIS PRODUCT, WHETHER IN CONTRACT, WARRANTY, TORT, NEGLIGENCE, STRICT LIABILITY OR OTHERWISE, SHALL NOT EXCEED THE PURCHASE PRICE PAID, OR AT ENVIRONMENTAL SCIENCE U.S., LLC'S ELECTION, THE REPLACEMENT OF PRODUCT.

Envu and the Envu logo are trademarks and DeltaGard® is a registered trademark owned by Environmental Science U.S., LLC or one of its affiliates.

PRODUCED FOR
Environmental Science U.S., LLC
5000 CentreGreen Way, Suite 400
Cary, NC 27513
Product of India



Deltagard G

Version	Revision Date:	SDS Number:	Date of last issue: -
1.0	07/31/2023	11252822-00001	Date of first issue: 07/31/2023

SECTION 1. IDENTIFICATION

Product name : Deltagard G

Product code : Article/SKU: 79121539 UVP: 79020090 Specification: 102000015309

Manufacturer or supplier's details

Company name of supplier : Environmental Science U.S. LLC.

Address : 5000 Centregreen Way, Suite 400
Cary NC 27513

Telephone : 1-800-331-2867

Emergency telephone : +1 703-741-5970

E-mail address : uscontact@envu.com

Recommended use of the chemical and restrictions on use

Recommended use : Insecticide

Restrictions on use : See product label for restrictions.

SECTION 2. HAZARDS IDENTIFICATION**GHS classification in accordance with the OSHA Hazard Communication Standard (29 CFR 1910.1200)**

Not a hazardous substance or mixture.

GHS label elements

No hazard pictogram, no signal word, no hazard statement(s), no precautionary statement(s) required

Other hazards

Cutaneous sensations may occur, such as burning or stinging on the face and mucosae. However, these sensations cause no lesions and are of a transitory nature (max. 24 hours).

SECTION 3. COMPOSITION/INFORMATION ON INGREDIENTS

Substance / Mixture : Mixture

Chemical nature : Granule (GR)

Components

Chemical name	CAS-No.	Concentration (% w/w)
Calcium sulfate dihydrate	10101-41-4	≥ 90 - ≤ 100
Deltamethrin	52918-63-5	≥ 0.1 - < 1

Actual concentration is withheld as a trade secret

Deltagard G

Version	Revision Date:	SDS Number:	Date of last issue: -
1.0	07/31/2023	11252822-00001	Date of first issue: 07/31/2023

SECTION 4. FIRST AID MEASURES

- | | | |
|---|---|---|
| If inhaled | : | If inhaled, remove to fresh air.
Get medical attention if symptoms occur. |
| In case of skin contact | : | Wash with water and soap as a precaution.
Get medical attention if symptoms occur. |
| In case of eye contact | : | Flush eyes with water as a precaution.
Get medical attention if irritation develops and persists. |
| If swallowed | : | If swallowed, DO NOT induce vomiting.
Get medical attention if symptoms occur.
Rinse mouth thoroughly with water. |
| Most important symptoms and effects, both acute and delayed | : | No symptoms known or expected.
This product contains a pyrethroid.
Pyrethroid poisoning should not be confused with carbamate or organophosphate poisoning. |
| Protection of first-aiders | : | No special precautions are necessary for first aid responders. |
| Notes to physician | : | Appropriate supportive and symptomatic treatment as indicated by the patient's condition is recommended. |

SECTION 5. FIRE-FIGHTING MEASURES

- | | | |
|--|---|---|
| Suitable extinguishing media | : | Water spray
Alcohol-resistant foam
Carbon dioxide (CO ₂)
Dry chemical |
| Unsuitable extinguishing media | : | High volume water jet |
| Specific hazards during fire fighting | : | Exposure to combustion products may be a hazard to health. |
| Hazardous combustion products | : | Metal oxides
Sulfur oxides
Carbon oxides |
| Specific extinguishing methods | : | Use extinguishing measures that are appropriate to local circumstances and the surrounding environment.
Use water spray to cool unopened containers.
Remove undamaged containers from fire area if it is safe to do so.
Evacuate area. |
| Special protective equipment for fire-fighters | : | Wear self-contained breathing apparatus for firefighting if necessary.
Use personal protective equipment. |

SECTION 6. ACCIDENTAL RELEASE MEASURES

Deltagard G

Version	Revision Date:	SDS Number:	Date of last issue: -
1.0	07/31/2023	11252822-00001	Date of first issue: 07/31/2023

- Personal precautions, protective equipment and emergency procedures : Follow safe handling advice (see section 7) and personal protective equipment recommendations (see section 8).
- Environmental precautions : Avoid release to the environment.
Prevent further leakage or spillage if safe to do so.
Retain and dispose of contaminated wash water.
Local authorities should be advised if significant spillages cannot be contained.
- Methods and materials for containment and cleaning up : Sweep up or vacuum up spillage and collect in suitable container for disposal.
Local or national regulations may apply to releases and disposal of this material, as well as those materials and items employed in the cleanup of releases. You will need to determine which regulations are applicable.
Sections 13 and 15 of this SDS provide information regarding certain local or national requirements.

SECTION 7. HANDLING AND STORAGE

- Technical measures : See Engineering measures under EXPOSURE CONTROLS/PERSONAL PROTECTION section.
- Local/Total ventilation : Use only with adequate ventilation.
- Advice on safe handling : Handle in accordance with good industrial hygiene and safety practice, based on the results of the workplace exposure assessment
Take care to prevent spills, waste and minimize release to the environment.
- Conditions for safe storage : Keep in properly labeled containers.
Store in accordance with the particular national regulations.
- Materials to avoid : Do not store with the following product types:
Strong oxidizing agents

SECTION 8. EXPOSURE CONTROLS/PERSONAL PROTECTION

Ingredients with workplace control parameters

Components	CAS-No.	Value type (Form of exposure)	Control parameters / Permissible concentration	Basis
Calcium sulfate dihydrate	10101-41-4	TWA (Respirable)	5 mg/m ³	NIOSH REL
		TWA (total)	10 mg/m ³	NIOSH REL
		TWA (total dust)	15 mg/m ³	OSHA Z-1
		TWA (respirable fraction)	5 mg/m ³	OSHA Z-1
		TWA (Inhal-)	10 mg/m ³	ACGIH

Deltagard G

Version 1.0	Revision Date: 07/31/2023	SDS Number: 11252822-00001	Date of last issue: - Date of first issue: 07/31/2023
----------------	------------------------------	-------------------------------	--

		able particu- late matter)	(Calcium)	
--	--	-------------------------------	-----------	--

Engineering measures : Ensure adequate ventilation, especially in confined areas.
Minimize workplace exposure concentrations.
Apply measures to prevent dust explosions.

Personal protective equipment

Respiratory protection : General and local exhaust ventilation is recommended to maintain vapor exposures below recommended limits. Where concentrations are above recommended limits or are unknown, appropriate respiratory protection should be worn. Follow OSHA respirator regulations (29 CFR 1910.134) and use NIOSH/MSHA approved respirators. Protection provided by air purifying respirators against exposure to any hazardous chemical is limited. Use a positive pressure air supplied respirator if there is any potential for uncontrolled release, exposure levels are unknown, or any other circumstance where air purifying respirators may not provide adequate protection.

Hand protection
Material : Nitrile rubber

Remarks : Choose gloves to protect hands against chemicals depending on the concentration specific to place of work. For special applications, we recommend clarifying the resistance to chemicals of the aforementioned protective gloves with the glove manufacturer. Wash hands before breaks and at the end of workday. Breakthrough time is not determined for the product. Change gloves often!

Eye protection : Wear the following personal protective equipment:
Safety glasses

Skin and body protection : Skin should be washed after contact.

Hygiene measures : If exposure to chemical is likely during typical use, provide eye flushing systems and safety showers close to the working place.
When using do not eat, drink or smoke.
Wash contaminated clothing before re-use.

SECTION 9. PHYSICAL AND CHEMICAL PROPERTIES

Appearance : granular

Color : gray, tan

Odor : slight

Deltagard G

Version	Revision Date:	SDS Number:	Date of last issue: -
1.0	07/31/2023	11252822-00001	Date of first issue: 07/31/2023

Odor Threshold	:	No data available
pH	:	No data available
Melting point/freezing point	:	No data available
Initial boiling point and boiling range	:	No data available
Flash point	:	Not applicable
Evaporation rate	:	Not applicable
Flammability (solid, gas)	:	Not classified as a flammability hazard
Upper explosion limit / Upper flammability limit	:	Not applicable
Lower explosion limit / Lower flammability limit	:	Not applicable
Vapor pressure	:	Not applicable
Relative vapor density	:	Not applicable
Density	:	Not applicable
Bulk density	:	880.99 - 1,009.134 kg/m ³ 945 - 1,105 kg/m ³ Pour density
Solubility(ies) Water solubility	:	insoluble
Partition coefficient: n-octanol/water	:	Not applicable
Autoignition temperature	:	No data available
Decomposition temperature	:	No data available
Viscosity Viscosity, kinematic	:	Not applicable
Explosive properties	:	Not explosive
Oxidizing properties	:	The substance or mixture is not classified as oxidizing.
Particle size	:	No data available

Deltagard G

Version	Revision Date:	SDS Number:	Date of last issue: -
1.0	07/31/2023	11252822-00001	Date of first issue: 07/31/2023

SECTION 10. STABILITY AND REACTIVITY

Reactivity	:	Not classified as a reactivity hazard.
Chemical stability	:	Stable under normal conditions.
Possibility of hazardous reactions	:	Can react with strong oxidizing agents.
Conditions to avoid	:	None known.
Incompatible materials	:	Oxidizing agents
Hazardous decomposition products	:	No hazardous decomposition products are known.

SECTION 11. TOXICOLOGICAL INFORMATION**Information on likely routes of exposure**

Skin contact
Ingestion
Eye contact

Acute toxicity

Not classified based on available information.

Product:

Acute oral toxicity	:	Acute toxicity estimate: > 5,000 mg/kg Method: Calculation method
Acute inhalation toxicity	:	Acute toxicity estimate: > 200 mg/l Exposure time: 4 h Test atmosphere: dust/mist Method: Calculation method

Components:**Calcium sulfate dihydrate:**

Acute oral toxicity	:	LD50 (Rat): > 2,000 mg/kg Method: OECD Test Guideline 420
Acute inhalation toxicity	:	LC50 (Rat): > 3.26 mg/l Exposure time: 4 h Test atmosphere: dust/mist Method: OECD Test Guideline 403

Deltamethrin:

Acute oral toxicity	:	LD50 (Rat, female): 87 mg/kg Method: OECD Test Guideline 401
Acute inhalation toxicity	:	LC50 (Rat): 0.6 mg/l Exposure time: 6 h Test atmosphere: dust/mist

Deltagard G

Version	Revision Date:	SDS Number:	Date of last issue: -
1.0	07/31/2023	11252822-00001	Date of first issue: 07/31/2023

Method: OECD Test Guideline 403

Acute dermal toxicity : LD50 (Rabbit): > 2,000 mg/kg
Method: OECD Test Guideline 402
Assessment: The substance or mixture has no acute dermal toxicity

Skin corrosion/irritation

Not classified based on available information.

Components:**Calcium sulfate dihydrate:**

Species : Rabbit
Method : OECD Test Guideline 404
Result : No skin irritation

Deltamethrin:

Species : Rabbit
Method : OECD Test Guideline 404
Result : No skin irritation

Serious eye damage/eye irritation

Not classified based on available information.

Components:**Calcium sulfate dihydrate:**

Species : Rabbit
Result : No eye irritation
Method : OECD Test Guideline 405
Remarks : Based on data from similar materials

Deltamethrin:

Species : Rabbit
Result : No eye irritation
Method : OECD Test Guideline 405

Respiratory or skin sensitization**Skin sensitization**

Not classified based on available information.

Respiratory sensitization

Not classified based on available information.

Components:**Calcium sulfate dihydrate:**

Test Type : Buehler Test
Routes of exposure : Skin contact
Species : Guinea pig
Method : OECD Test Guideline 406

Deltagard G

Version	Revision Date:	SDS Number:	Date of last issue: -
1.0	07/31/2023	11252822-00001	Date of first issue: 07/31/2023

Result : negative

Deltamethrin:

Test Type	: Buehler Test
Routes of exposure	: Skin contact
Species	: Guinea pig
Method	: OECD Test Guideline 406
Result	: negative

Germ cell mutagenicity

Not classified based on available information.

Components:**Calcium sulfate dihydrate:**

Genotoxicity in vitro	: Test Type: Bacterial reverse mutation assay (AMES) Method: OECD Test Guideline 471 Result: negative
-----------------------	---

Test Type: In vitro mammalian cell gene mutation test
Method: OECD Test Guideline 476
Result: negative

Genotoxicity in vivo	: Test Type: Mammalian erythrocyte micronucleus test (in vivo cytogenetic assay) Species: Mouse Application Route: Ingestion Method: OECD Test Guideline 474 Result: negative
----------------------	---

Deltamethrin:

Genotoxicity in vitro	: Test Type: Bacterial reverse mutation assay (AMES) Result: negative
-----------------------	--

Test Type: In vitro mammalian cell gene mutation test
Method: OECD Test Guideline 473
Result: negative

Test Type: DNA damage and repair, unscheduled DNA synthesis in mammalian cells (in vitro)
Method: OECD Test Guideline 482
Result: negative

Carcinogenicity

Not classified based on available information.

Components:**Calcium sulfate dihydrate:**

Species	: Rat
Application Route	: Ingestion

Deltagard G

Version	Revision Date:	SDS Number:	Date of last issue: -
1.0	07/31/2023	11252822-00001	Date of first issue: 07/31/2023

Exposure time : 104 weeks
Result : negative

Deltamethrin:

Species : Rat
Application Route : Ingestion
Method : OECD Test Guideline 453
Result : negative

IARC No ingredient of this product present at levels greater than or equal to 0.1% is identified as probable, possible or confirmed human carcinogen by IARC.

OSHA No component of this product present at levels greater than or equal to 0.1% is on OSHA's list of regulated carcinogens.

NTP No ingredient of this product present at levels greater than or equal to 0.1% is identified as a known or anticipated carcinogen by NTP.

Reproductive toxicity

Not classified based on available information.

Components:**Calcium sulfate dihydrate:**

Effects on fertility : Test Type: Combined repeated dose toxicity study with the reproduction/developmental toxicity screening test
Species: Rat
Application Route: Ingestion
Method: OECD Test Guideline 422
Result: negative

Effects on fetal development : Test Type: Combined repeated dose toxicity study with the reproduction/developmental toxicity screening test
Species: Rat
Application Route: Ingestion
Method: OECD Test Guideline 422
Result: negative

Deltamethrin:

Effects on fertility : Test Type: Two-generation reproduction toxicity study
Species: Rat
Application Route: Ingestion
Method: OECD Test Guideline 416
Result: negative

Effects on fetal development : Test Type: Embryo-fetal development
Species: Rabbit
Application Route: Ingestion
Method: OECD Test Guideline 414
Result: negative

Deltagard G

Version	Revision Date:	SDS Number:	Date of last issue: -
1.0	07/31/2023	11252822-00001	Date of first issue: 07/31/2023

STOT-single exposure

Not classified based on available information.

STOT-repeated exposure

Not classified based on available information.

Components:**Deltamethrin:**

Assessment : No significant health effects observed in animals at concentrations of 100 mg/kg bw or less.

Repeated dose toxicity**Components:****Calcium sulfate dihydrate:**

Species : Rat
NOAEL : 100 mg/kg
LOAEL : 300 mg/kg
Application Route : Ingestion
Exposure time : 45 Days
Method : OECD Test Guideline 422

Deltamethrin:

Species : Dog
NOAEL : 1 mg/kg
LOAEL : 10 mg/kg
Application Route : Ingestion
Exposure time : 52 Weeks
Method : OECD Test Guideline 452

Aspiration toxicity

Not classified based on available information.

SECTION 12. ECOLOGICAL INFORMATION**Ecotoxicity****Components:****Calcium sulfate dihydrate:**

Toxicity to fish : LC50 (*Oryzias latipes* (Japanese medaka)): > 100 mg/l
Exposure time: 96 h
Method: OECD Test Guideline 203

Toxicity to daphnia and other aquatic invertebrates : EC50 (*Daphnia magna* (Water flea)): > 100 mg/l
Exposure time: 48 h
Method: OECD Test Guideline 202

Toxicity to algae/aquatic plants : ErC50 (*Selenastrum capricornutum* (green algae)): > 100 mg/l
Exposure time: 72 h
Test substance: Water Accommodated Fraction

Deltagard G

Version	Revision Date:	SDS Number:	Date of last issue: -
1.0	07/31/2023	11252822-00001	Date of first issue: 07/31/2023

Method: OECD Test Guideline 201

NOEC (*Selenastrum capricornutum* (green algae)): > 1 mg/l
 Exposure time: 72 h
 Test substance: Water Accommodated Fraction
 Method: OECD Test Guideline 201

Toxicity to microorganisms : EC50: > 100 mg/l
 Exposure time: 3 h
 Method: OECD Test Guideline 209

Deltamethrin:

Toxicity to fish : LC50 (*Oncorhynchus mykiss* (rainbow trout)): 0.15 µg/l
 Exposure time: 96 h

Toxicity to daphnia and other aquatic invertebrates : EC50 (*Gammarus fasciatus* (freshwater shrimp)): 0.0003 µg/l
 Exposure time: 96 h

Toxicity to algae/aquatic plants : ErC50 (*Chlorella vulgaris* (Fresh water algae)): > 0.47 mg/l
 Exposure time: 96 h

Toxicity to fish (Chronic toxicity) : NOEC (*Pimephales promelas* (fathead minnow)): 0.017 µg/l
 Exposure time: 260 d

Toxicity to daphnia and other aquatic invertebrates (Chronic toxicity) : NOEC (*Daphnia magna* (Water flea)): 0.0041 µg/l
 Exposure time: 21 d

Toxicity to microorganisms : EC50 (activated sludge): > 0.3 mg/l
 Exposure time: 3 h

Persistence and degradability**Components:****Deltamethrin:**

Biodegradability : Result: Not readily biodegradable.
 Biodegradation: 0 %
 Exposure time: 28 d
 Method: OECD Test Guideline 301F

Bioaccumulative potential**Components:****Calcium sulfate dihydrate:**

Partition coefficient: n-octanol/water : log Pow: -1.03
 Remarks: Calculation method

Deltamethrin:

Bioaccumulation : Species: *Lepomis macrochirus* (Bluegill sunfish)
 Bioconcentration factor (BCF): 1,400

Deltagard G

Version	Revision Date:	SDS Number:	Date of last issue: -
1.0	07/31/2023	11252822-00001	Date of first issue: 07/31/2023

Partition coefficient: n-octanol/water : log Pow: 6.4

Mobility in soil

No data available

Other adverse effects

No data available

SECTION 13. DISPOSAL CONSIDERATIONS**Disposal methods**

Waste from residues : It is best to use all of the product in accordance with label directions. If it is necessary to dispose of unused product, please follow container label instructions and applicable local guidelines.
Do not dispose of waste into sewer.

Contaminated packaging : Follow advice on product label and/or leaflet.
Empty containers retain residue and can be dangerous.
Do not re-use empty containers.

SECTION 14. TRANSPORT INFORMATION**International Regulations****UNRTDG**

UN number : UN 3077
Proper shipping name : ENVIRONMENTALLY HAZARDOUS SUBSTANCE, SOLID, N.O.S.
(Deltamethrin)
Class : 9
Packing group : III
Labels : 9

IATA-DGR

UN/ID No. : UN 3077
Proper shipping name : Environmentally hazardous substance, solid, n.o.s.
(Deltamethrin)
Class : 9
Packing group : III
Labels : Miscellaneous
Packing instruction (cargo aircraft) : 956
Packing instruction (passenger aircraft) : 956
Environmentally hazardous : yes

IMDG-Code

UN number : UN 3077
Proper shipping name : ENVIRONMENTALLY HAZARDOUS SUBSTANCE, SOLID, N.O.S.
(Deltamethrin)
Class : 9

Deltagard G

Version	Revision Date:	SDS Number:	Date of last issue: -
1.0	07/31/2023	11252822-00001	Date of first issue: 07/31/2023

Packing group	:	III
Labels	:	9
EmS Code	:	F-A, S-F
Marine pollutant	:	yes

Transport in bulk according to Annex II of MARPOL 73/78 and the IBC Code

Not applicable for product as supplied.

Domestic regulation**49 CFR**

UN/ID/NA number	:	UN 3077
Proper shipping name	:	Environmentally hazardous substance, solid, n.o.s. (Deltamethrin)
Class	:	9
Packing group	:	III
Labels	:	CLASS 9
ERG Code	:	171
Marine pollutant	:	yes(Deltamethrin)
Remarks	:	Above applies only to containers over 119 gallons or 450 li- ters. Shipment by ground under DOT is non-regulated; however it may be shipped per the applicable hazard classification to facilitate multi-modal transport involving ICAO (IATA) or IMO.

Special precautions for user

The transport classification(s) provided herein are for informational purposes only, and solely based upon the properties of the unpackaged material as it is described within this Safety Data Sheet. Transportation classifications may vary by mode of transportation, package sizes, and variations in regional or country regulations.

SECTION 15. REGULATORY INFORMATION**CERCLA Reportable Quantity**

This material does not contain any components with a CERCLA RQ.

SARA 304 Extremely Hazardous Substances Reportable Quantity

This material does not contain any components with a section 304 EHS RQ.

SARA 302 Extremely Hazardous Substances Threshold Planning Quantity

This material does not contain any components with a section 302 EHS TPQ.

SARA 311/312 Hazards : No SARA Hazards

SARA 313 : This material does not contain any chemical components with known CAS numbers that exceed the threshold (De Minimis) reporting levels established by SARA Title III, Section 313.

US State Regulations**Pennsylvania Right To Know**

Calcium sulfate dihydrate	10101-41-4
---------------------------	------------

California Permissible Exposure Limits for Chemical Contaminants

Calcium sulfate dihydrate	10101-41-4
---------------------------	------------

Deltagard G

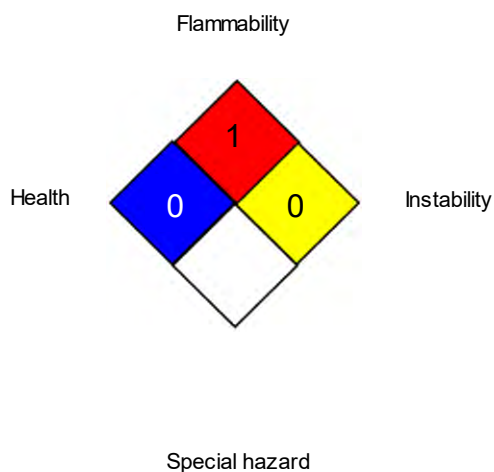
Version	Revision Date:	SDS Number:	Date of last issue: -
1.0	07/31/2023	11252822-00001	Date of first issue: 07/31/2023

Authorization number	:	432-836
Product Type	:	Insecticides, acaricides and products to control other arthropods
Active substance	:	0.1 % Deltamethrin

SECTION 16. OTHER INFORMATION

Further information

NFPA 704:



HMIS® IV:

HEALTH	/	0
FLAMMABILITY		1
PHYSICAL HAZARD		0

HMIS® ratings are based on a 0-4 rating scale, with 0 representing minimal hazards or risks, and 4 representing significant hazards or risks. The "*" represents a chronic hazard, while the "/" represents the absence of a chronic hazard.

Full text of other abbreviations

ACGIH	:	USA. ACGIH Threshold Limit Values (TLV)
NIOSH REL	:	USA. NIOSH Recommended Exposure Limits
OSHA Z-1	:	USA. Occupational Exposure Limits (OSHA) - Table Z-1 Limits for Air Contaminants
ACGIH / TWA	:	8-hour, time-weighted average
NIOSH REL / TWA	:	Time-weighted average concentration for up to a 10-hour workday during a 40-hour workweek
OSHA Z-1 / TWA	:	8-hour time weighted average

AIIC - Australian Inventory of Industrial Chemicals; ASTM - American Society for the Testing of Materials; bw - Body weight; CERCLA - Comprehensive Environmental Response, Compensation, and Liability Act; CMR - Carcinogen, Mutagen or Reproductive Toxicant; DIN - Standard of the German Institute for Standardisation; DOT - Department of Transportation; DSL - Domestic Substances List (Canada); ECx - Concentration associated with x% response; EHS - Extremely Hazardous Substance; ELx - Loading rate associated with x% response; EmS - Emergency Schedule; ENCS - Existing and New Chemical Substances (Japan); ErCx - Concentration associated with x% growth rate response; ERG - Emergency Response Guide; GHS - Globally Harmonized System; GLP - Good Laboratory Practice; HMIS - Hazardous Materials Identification System; IARC - International Agency for Research on Cancer; IATA - International Air Transport Association; IBC - International Code for the Construction and Equipment of Ships carrying Dangerous Chemicals in Bulk; IC50 - Half maximal inhibitory concentration; ICAO - International Civil Aviation Organization

Deltagard G

Version	Revision Date:	SDS Number:	Date of last issue: -
1.0	07/31/2023	11252822-00001	Date of first issue: 07/31/2023

tion; IECSC - Inventory of Existing Chemical Substances in China; IMDG - International Maritime Dangerous Goods; IMO - International Maritime Organization; ISHL - Industrial Safety and Health Law (Japan); ISO - International Organisation for Standardization; KECI - Korea Existing Chemicals Inventory; LC50 - Lethal Concentration to 50 % of a test population; LD50 - Lethal Dose to 50% of a test population (Median Lethal Dose); MARPOL - International Convention for the Prevention of Pollution from Ships; MSHA - Mine Safety and Health Administration; n.o.s. - Not Otherwise Specified; NFPA - National Fire Protection Association; NO(A)EC - No Observed (Adverse) Effect Concentration; NO(A)EL - No Observed (Adverse) Effect Level; NOELR - No Observable Effect Loading Rate; NTP - National Toxicology Program; NZIoC - New Zealand Inventory of Chemicals; OECD - Organization for Economic Co-operation and Development; OPPTS - Office of Chemical Safety and Pollution Prevention; PBT - Persistent, Bioaccumulative and Toxic substance; PICCS - Philippines Inventory of Chemicals and Chemical Substances; (Q)SAR - (Quantitative) Structure Activity Relationship; RCRA - Resource Conservation and Recovery Act; REACH - Regulation (EC) No 1907/2006 of the European Parliament and of the Council concerning the Registration, Evaluation, Authorisation and Restriction of Chemicals; RQ - Reportable Quantity; SADT - Self-Accelerating Decomposition Temperature; SARA - Superfund Amendments and Reauthorization Act; SDS - Safety Data Sheet; TCSI - Taiwan Chemical Substance Inventory; TECL - Thailand Existing Chemicals Inventory; TSCA - Toxic Substances Control Act (United States); UN - United Nations; UNRTDG - United Nations Recommendations on the Transport of Dangerous Goods; vPvB - Very Persistent and Very Bioaccumulative

Sources of key data used to compile the Material Safety Data Sheet : Internal technical data, data from raw material SDSs, OECD eChem Portal search results and European Chemicals Agency, <http://echa.europa.eu/>

Revision Date : 07/31/2023

The information provided in this Safety Data Sheet is correct to the best of our knowledge, information and belief at the date of its publication. The information is designed only as a guidance for safe handling, use, processing, storage, transportation, disposal and release and shall not be considered a warranty or quality specification of any type. The information provided relates only to the specific material identified at the top of this SDS and may not be valid when the SDS material is used in combination with any other materials or in any process, unless specified in the text. Material users should review the information and recommendations in the specific context of their intended manner of handling, use, processing and storage, including an assessment of the appropriateness of the SDS material in the user's end product, if applicable.

US / Z8