



PULL TAB TO OPEN

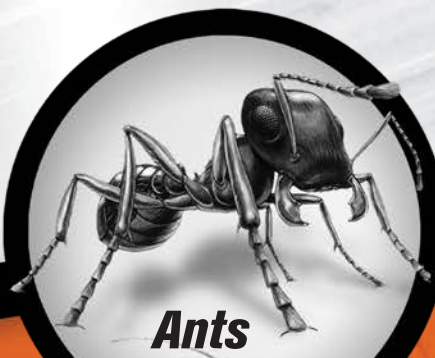
PRESS TO RESEAL

niban[®]

GRANULAR BAIT

kills and controls

**Cockroaches, Silverfish,
Crickets, Slugs, Snails,
Carpenter Ants and Ants
(except fire ants)**



Ants



Cockroaches



Silverfish



Crickets



Slugs



Snails

ACCEPTED
VIA NOTIFICATION
LABEL NOT REVIEWED

JUNE 03 2025

New York State Department
of Environmental Conservation
Division of Materials Management
Pesticide Product Registration

Doc ID: 599976



NISUS[®]

KEEP OUT OF REACH OF CHILDREN

CAUTION

See back panel for First Aid, additional Precautionary
Statements and complete Directions for Use.

NET CONTENTS 10 lbs. (4.54 kg)

ACTIVE INGREDIENT:

Orthoboric Acid 5%

OTHER INGREDIENTS 95%

TOTAL 100%

EPA Reg No. 64405-2

EPA EST. 64405-TN-1



6 166093 330401

niban[®]

GRANULAR BAIT

NIBAN® GRANULAR BAIT

A Weather/Moisture Resistant Bait to Kill and Control Ants (except fire ants), Carpenter Ants, Cockroaches, Crickets, Earwigs, Silverfish, Snails and Slugs
FOR BOTH INTERIOR AND EXTERIOR USE

FIRST AID

If in Eyes:	<ul style="list-style-type: none">• Hold eye open and rinse slowly and gently with water for 15-20 minutes. Remove contact lenses, if present, after the first 5 minutes, then continue rinsing.• Call a poison control center or doctor for treatment advice.
If on Skin:	<ul style="list-style-type: none">• Take off contaminated clothing.• Immediately rinse skin with plenty of water for 15-20 minutes.• Call a poison control center or doctor for treatment advice.
Have the product container or label with you when calling a poison control center or doctor or going for treatment. You may also call 1-800-535-5053 for emergency medical treatment information.	

PRECAUTIONARY STATEMENTS
Hazards to Humans & Domestic Animals

CAUTION: Harmful if absorbed through skin. Causes moderate eye irritation. Avoid contact with skin, eyes or clothing.

Personal Protective Equipment (PPE) Applicators and handlers must wear: Long pants; waterproof gloves; and shoes plus socks. Follow manufacturer's instructions for cleaning/maintaining PPE. If no such instructions for washables are given, use detergent and hot water. Additionally, a long-sleeved shirt is required in California.
--

User Safety Recommendations

Users should: <ul style="list-style-type: none">• Wash hands before eating, drinking, chewing gum, using tobacco or using the toilet.• Remove clothing immediately if pesticide gets inside; then thoroughly wash and put on clean clothing.• Immediately remove PPE after handling this product. Wash the outside of gloves before removing. As soon as possible, thoroughly wash and change into clean clothing.

Environmental Hazards

Do not apply directly to water, to areas where surface water is present or to intertidal areas below the mean high-water mark. Do not contaminate water when disposing of equipment washwaters or rinsate.

DIRECTIONS FOR USE

It is a violation of Federal law to use this product in a manner inconsistent with its labeling.

Notice

Read and understand the entire label before using. Use only according to label directions. Before buying or using this product, read **Warranty Disclaimer** and **Limitation of Remedies** statements found elsewhere on this label. If terms are unacceptable, return unopened package to seller for full refund of purchase price. Otherwise, use by the buyer or any other user constitutes acceptance of the terms under **Warranty Disclaimer** and **Limitation of Remedies**.

Not for use on plants or turf being grown for sale on sod farms, commercial greenhouses or nurseries, or for commercial seed production, or for research purposes. For use on plants or turf intended for aesthetic, recreational purposes or climate modification and being grown in interior landscapes, ornamental gardens or parks, recreational areas, or lawns or grounds.

GENERAL INFORMATION

This product is a ready-to-use, weather/moisture resistant bait that controls and kills ants (except fire ants), cockroaches, crickets, earwigs, silverfish, snails and slugs, specifically: **ANTS:** Argentine, Carpenter, Thief, Pharaoh, Little Black, Pavement, Odorous House and Crazy Ants. **COCKROACHES:** Asian, American, Brown, Brownbanded, Smokeybrown, German and Oriental Cockroaches. **CRICKETS:** Camel, House, Field and Mole Crickets. **SNAILS AND SLUGS. EUROPEAN EARWIGS.**

Do not contaminate this product with other pesticides. If this product becomes contaminated with another pesticide it will lose its effectiveness. Do not apply directly to food and avoid contamination of feed and foodstuff. In commercial food handling facilities, cover or remove any food during application. In food handling and other areas, bait may be placed in removable bait stations. This product is designed to be used as a residual treatment in an Integrated Pest Management program incorporating good sanitation practices.

This product may be applied in appropriate areas with a power duster (except in California). Consult equipment manufacturer for recommended settings.

Keep children and pets out of treatment area until application has been completed. Do not treat pets with this product. Avoid over-application around ornamental plants and fish ponds. Do not apply this product in combination with fertilizers, other pesticides or other biologically-active materials.

APPLICATION INSTRUCTIONS

Exterior Applications:

Apply bait evenly at the rate of 2 to 4 pounds per 1,000 square feet. Treat exterior perimeter areas of structure in band 2 to 4 feet wide. Also apply in a 2- to 4-foot band around all trees, stumps and firewood piles. Scatter bait in other localized sites. Reapply as necessary. If any ant nests are located, apply 1/2 to 1 ounce of product directly to the area.

Interior Applications:

Apply only in areas inaccessible to children and pets. Avoid contamination of food and feedstuffs. This product may be applied to cracks and crevices where insects may hide. Apply by scattering and dusting under and behind refrigerators, coolers, stoves, sinks, dishwashers, washing machines, dryer tubs, cabinet voids and counters. Apply as needed into openings around drains, water pipes and electrical conduits, and in cracks and crevices along baseboards and corners of cabinets, countertops, cupboards and closets.

Spread evenly in crawl spaces, attics, drop ceilings and cellars with dirt or gravel floors. In sewers, apply along ledges and around manhole entrances. Bait may also be placed in removable bait stations in areas accessible to insects, but inaccessible to children and pets. Any bait visible after application must be brushed into cracks and crevices or removed.

Exterior Baiting to Control and Kill Ants (except fire ants), Including Carpenter Ants, Around Apartment Buildings, Food Processing Plants, Garages, Homes, Hospitals, Hotels, Kennels, Motels, Pet Stores, Public & Private Institutions, Recreational Vehicles, Restaurants, Schools, Supermarkets, Warehouses and Other Structures: Treat exterior perimeter areas of structure in a band 2 to 4 feet wide at a rate of 6 ounces per 100 square feet. Also apply product in a 2- to 4-foot band around all trees, stumps, firewood piles and other locations where carpenter ants may nest. If the nest is located in a hollow tree or stump, apply 1/2 to 1 ounce of product directly into the cavity. Apply along ant trails and in areas where ant activity has been noted.

To Control and Kill Ants (except fire ants), Cockroaches, Crickets, Earwigs and Silverfish Within and Around the Exterior of Structures such as Apartment Buildings, Garages, Homes and Kennels: Apply at a rate of 4 pounds per 1,000 square feet (6 ounces or 1.25 cups per 100 square feet) of surface area. Spread evenly in crawl spaces, attics, drop ceilings and cellars with dirt or gravel floors. Concentrate application in areas where insect activity is most prevalent. In attics, be sure to apply in eaves and access drains. In garages and basements, concentrate application along walls and baseboards. This product may also be applied in inaccessible areas such as cracks and crevices where insects may hide. Any bait visible after application must be brushed into cracks and crevices or removed. Reapply as necessary.

To Control and Kill Cockroaches, Crickets, Ants, Earwigs and Silverfish in Federally-inspected (USDA) meat and poultry plants: For application only in inedible product areas and non-processing areas as a crack and crevice treatment. Any bait visible after application must be brushed into cracks and crevices or removed. Avoid contamination of feed and foodstuffs.

STORAGE AND DISPOSAL

Do not contaminate water, food or feed by storage or disposal.

Pesticide Storage: Store in a dry place. Do not store where children or animals may gain access. **Pesticide Disposal:** Wastes resulting from the use of this product may be disposed of on site or at an approved waste disposal facility. **Container Disposal:** Non-refillable bag; do not reuse or refill this bag. Completely empty bag into application equipment, then offer for recycling, if available; otherwise dispose of empty bag in a sanitary landfill or by incineration.

WARRANTY DISCLAIMER

To the extent not prohibited by applicable law, Manufacturer warrants that this product conforms to the chemical description on the label and is reasonably fit for the purposes stated on the label when used in strict accordance with the directions, subject to the inherent risks set forth below. To the extent not prohibited by applicable law, **MANUFACTURER MAKES NO OTHER EXPRESS OR IMPLIED WARRANTY OF MERCHANTABILITY, FITNESS FOR A PARTICULAR PURPOSE OR ANY OTHER EXPRESS OR IMPLIED WARRANTY.**

Inherent Risks of Use

The directions for use are believed to be adequate and must be carefully followed. It is impossible to eliminate all risks associated with use of this product. Lack of performance or other unintended consequences may result because of such factors as use of the product contrary to label instructions, abnormal conditions, the presence of other materials, climatic conditions or the manner of application, all of which are beyond the control of the Manufacturer. To the extent not prohibited by applicable law, the buyer/user assumes all such risks.

Limitation of Remedies

To the extent not prohibited by applicable law, the exclusive remedy for losses or damages resulting from this product (including claims based on contract, negligence, strict liability or other legal theories) shall be limited to, at Manufacturer's election, one of the following:

1. Refund of purchase price paid by buyer or user for product bought, or
2. Replacement of amount of product used.

To the extent not prohibited by applicable law: a) Manufacturer shall not be liable for losses or damages resulting from handling or use of this product unless Manufacturer is promptly notified of such loss or damage in writing; and b) **TO THE EXTENT NOT PROHIBITED BY APPLICABLE LAW, IN NO CASE SHALL MANUFACTURER BE LIABLE FOR CONSEQUENTIAL OR INCIDENTAL DAMAGES OR LOSSES, INCLUDING WITHOUT LIMIT, HEALTH RELATED DAMAGES OR INJURIES.**

The terms of this **Warranty Disclaimer** and **Limitation of Remedies** cannot be varied by any written or verbal statements or agreements. No employee or sales agent of Manufacturer or the seller is authorized to vary or exceed the terms of this **Warranty Disclaimer** or **Limitation of Remedies** in any manner.

It is not intended that this product be used to practice any applicable patent, whether mentioned or not, without procurement of a license if necessary from the owner following investigation by the user.



Nisus Corporation® • 100 Nisus Drive • Rockford, TN USA 37853 • (800) 264-0870

Niban, Nisus and Nisus Corporation are registered trademarks of Nisus Corporation. ©2025 Nisus Corporation #PL-NB10-0325-SAL070519